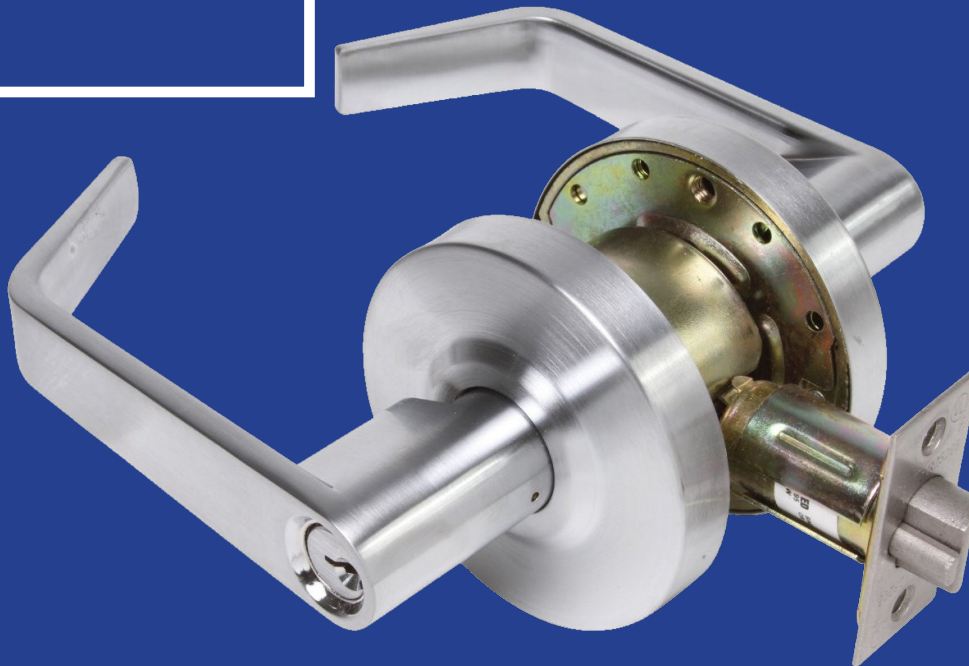


GRADE 2 LEVERS

Our Grade 2 Levers are the most versatile levers we offer. They comply with ANSI A156.2, Series 4000, Grade 2, 400,000 cycles, ANSI A117.1 accessibility (ADA) code, UL/ULC listed for 3 hour fire door. They have a cylindrical chassie that is steel-coated w/ zinc dichronate for corrosion resistance.

L253-26D-4

\$33⁰⁰



OPTIONS

Comes with standard Schlage C keyway. Available with "FW" (Clutch), and SFIC prep (Best).

FINISHES

Available in US3 (Brass), 10B (Duronotic) and 26D (Satin Chrome).

ABOUT R&H WHOLESALE SUPPLY

R&H Wholesale Supply Inc. is a wholesale distributor of door hardware and locksmith supplies. We have been located in San Francisco since 1949 and currently carry over 13,500 products from over 100 different product brands. Our PLS brand, which stands for professional locksmith supplies, is an in house brand that was created to fill a void for our customers. PLS delivers high quality security products at a great value.

VISIT US ONLINE



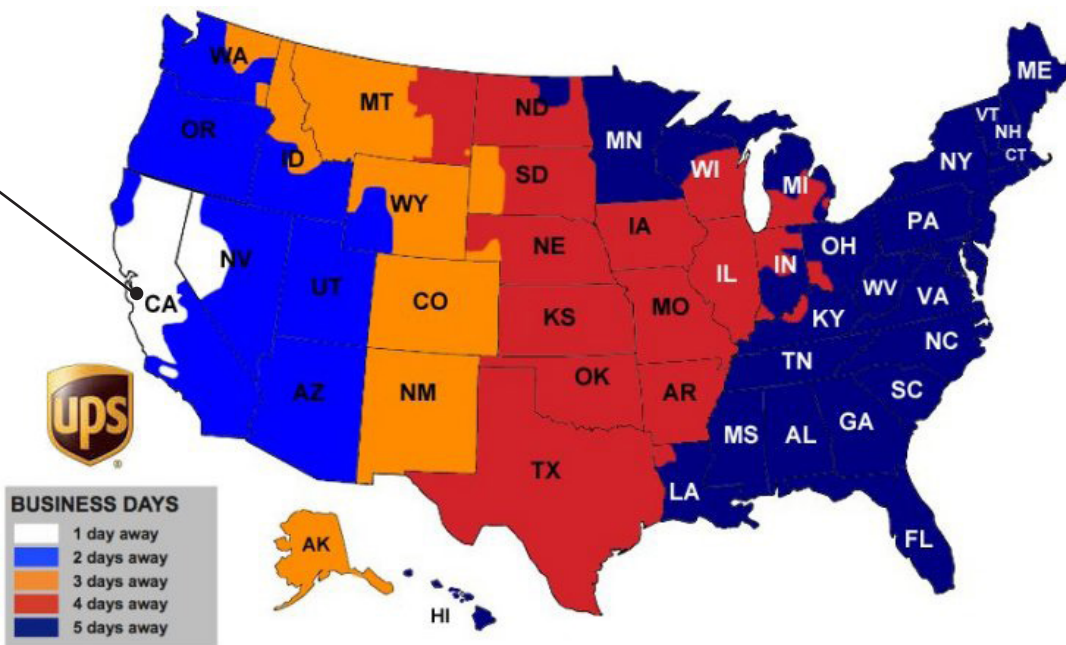
www.RHwholesale.com

* FREE UPS GROUND FREIGHT - \$350 order minimum

Orders place before 3:00 PM P.S.T ship same day.
 Order ship from our warehouse in San Francisco, California, 94124.
 Pricing subject to change without notice.

- * Some items like safes, key machines, and promotional items may not be included in our free freight policy.
- * Free freight does not include special shipping requests like Next Day, Second Day, or Three Day shipments.
- * Transit times are estimated and not guaranteed.
- * Excludes AK, HI.

San Francisco, California, 94124



All levers come Qty: 6 PER CASE

GRADE 1 LEVERS

Our Grade 1 Levers are heavy duty for commercial use. Great for commercial buildings such as schools, hospitals, government, retail and office. Complies with ANSI A156.2 - 2003, Series 4000, Grade 1, 800,000 cycles, UL/ULC listed for 3 hour fire door.

Standard Features

- Chassis: Cylindrical, steel - coated with zinc dichromate (corrosion resistance)
- Freewheeling clutch (added security from hammer attacks)
- Lever: Non-handed, solid cast
- Latch: 1-1/8" x 2-1/4", square corner faceplate
- 1" housing diameter (stainless steel), 1/2" throw
- Rose: 3-1/2" diameter
- Backset: 2-3/4"
- Strike: Square corner 1-1/4" x 4-7/8" ANSI ASA Strike
- Door Range: 1-3/8" to 2"
- Door Preparation: 2-1/8" diameter for lever, 1" diameter for latch bolt.
- Fits standard 161 door prep with through-bolting through the door.



L153-26D-4
\$68.00

GRD 1 LEVER C KWY 2-3/4" Backset

L110-26D-4	PASSAGE	\$65.06
L140-26D-4	PRIVACY	\$66.98
L153-26D-4	ENTRY	\$68.00
L170-26D-4	CLASSROOM	\$72.00
L175-26D-4	CLASSROOM SECURITY	\$75.00
L180-26D-4	STOREROOM	\$68.00

L-234-26D	2-3/4" DEADLATCH	\$11.16
L-238-26D	2-3/8" DEADLATCH	\$12.50
L-5-LINK	WORKS W/ 2-3/4" LATCHES	\$10.50

GRADE 2 LEVERS

All levers come Qty: 6 PER CASE

Our Grade 2 Levers are our most versatile levers. Complies with ANSI A156.2, Series 4000, Grade 2, 400,000 cycles, ANSI A117.1 accessibility (ADA) code, UL/ULC listed for 3 hour fire door.

Standard Features

- Chassis: Cylindrical, steel-coated w/ zinc dichromate (corrosion resistance)
- Latch: 1-1/8" x 2-1/4" square corner faceplate 3/4" housing, 1/2" throw (stainless steel).
- Rose: 3-1/4" diameter
- Removable thru-bolts standard
- Backset: 2-3/8" or 2-3/4"
- Strike: Square corner 1-1/4" x 4-7/8" ANSI ASA Strike
- Door Range: 1-3/8" to 2"
- Door Preparation: 2-1/8" diameter for bore, 1" diameter latch bore.

OPTIONAL FEATURES

- Chassis: Freewheeling clutch



L253-26D-4
\$33.00

GRD 2 LEVER C KWY

2-3/8" or 2-3/4" Backset		US3	10B	26D
L210	PASSAGE	\$37.00	\$39.00	\$33.25
L240	PRIVACY	\$37.00	\$39.95	\$33.75
L253	ENTRY	\$36.00	\$38.00	\$33.00
L270	CLASSROOM	\$38.00		\$37.54
L280	STOREROOM	\$36.00	\$38.00	\$33.00

LATCHES FOR GRD 2 LEVERS & KNOBS US3/10B/26D

ALCULSLD	2-3/8" OR 2-3/4" DEADLATCH	\$6.50
ALCULSLS	2-3/8" OR 2-3/4" SPRINGLATCH	\$6.50
SL5	WORKS W/ 2-3/4" LATCHES	\$12.53



L253FW-26D-4
\$36.98

Clutch Feature!
(Free Wheeling)

GRD 2 CLUTCH LEVER C KWY

2-3/8" or 2-3/4" Backset		US3	10B	26D
L253FW	ENTRY CLUTCH	\$38.00	\$39.00	\$36.98
L270FW	CLASSROOM CLUTCH			\$40.39
L280FW	STOREROOM CLUTCH	\$38.00	\$39.00	\$36.98



L280IC-26D-4
\$38.00

SFIC Prep!

GRD 2 LEVER SFIC PREP

2-3/4" Backset		26D
L253-IC-26D-4	ENTRY	\$38.00
L270-IC-26D-4	CLASSROOM	\$39.00
L280-IC-26D-4	STOREROOM	\$38.00

GRADE 1 KNOBS

Our Grade 1 Knobs are heavy duty for commercial use. Great for commercial buildings such as schools, hospitals, government, retail and office. Complies with ANSI A156.2 - 2003, Series 4000, Grade 1, 800,000 cycles, UL/ULC listed for 3 hour fire door.

Standard Features

- Cylindrical, steel chassis- coated with zinc dichromate (corrosion resistance)
- Rose 3" diameter
- Backset: 2-3/4"
- Strike: Square corner 1-1/4" x 4-7/8" ANSI ASA Strike
- Door Range: 1-3/8" to 2"
- Latch: 1-1/8" x 2-1/4", square corner faceplate



K153-26D-4
\$39⁷¹

GRD 1 KNOB

2-3/4" Backset

K153-32D	ENTRY	\$39.71
K180-32D	STOREROOM	\$39.71

GRADE 2 KNOBS

Our Grade 2 Knobs are a great heavy duty residential lock but they also work well on commercial doors with medium traffic.

Standard Features

- Complies with ANSI A156.2, Series 4000, Grade 2, (400,000 cycles)
- UL/ULC listed for 3 hour fire door
- Chassis: Cylindrical, steel - coated with zinc dichromate (corrosion resistance)
- Latch: 1-1/8" x 2-1/4", square corner faceplate
- 1" housing diameter (stainless steel), 1/2" throw
- Rose 3" diameter
- Backset: 2-3/4" OR 2-3/8"
- Strike: Square corner 1-1/4" x 4-7/8" ANSI ASA Strike
- Door Range: 1-3/8" to 1-3/4"
- Door Preparation: 2-1/8" diameter for knob, 1" diameter for latch bolt.



K253-26D-4
\$21⁰⁰

GRD 2 KNOB

2-3/8" or 2-3/4" Backset US3 10B US32D

K210	PASSAGE	\$25.00		\$20.66
K240	PRIVACY	\$25.00		\$21.22
K253	ENTRY	\$23.00	\$33.00	\$21.00
K270	CLASSROOM			\$23.09
K280	STOREROOM	\$23.00	\$33.00	\$21.00

LATCHES FOR GRD 2 LEVERS & KNOBS US3/10B/26D

ALCULSLD	2-3/8" OR 2-3/4" DEADLATCH	\$6.50
ALCULSLS	2-3/8" OR 2-3/4" SPRINGLATCH	\$6.50
SL5	WORKS W/ 2-3/4" LATCHES	\$12.53

GRADE 3 KNOBS

Our Grade 3 Knobs are great residential locks. They have a Plymouth style design with a tubular chassis and come with adjustable backsets. They are also available in Schlage and Kwikset keyways.

Standard Features

- Complies with ANSI A156.2 series 4000, Grade 3
- Chassis Tubular, steel
- Full lip strike
- Available in SC1 or KW1 keyway
- Latchbolt stainless steel with 1/2" throw
- Rose: 2-1/2" diameter
- Backset: Latch backset adjustable 2-3/8" to 2-3/4"



K353P-SC-US11P
\$10⁹⁵



K353P-SC-US15
\$10⁹⁵

GRD 3 KNOB SC1 or KW1 KKY

ADJ BACKSET US3 US5 US11P US15

K310P	PASSAGE	\$9.95	\$9.95	\$12.50	\$9.95
K340P	PRIVACY	\$10.50	\$10.50	\$12.95	\$10.50
K353P-KW	ENTRY KW1	\$10.95	\$10.95	\$11.50	\$10.95
K353P-SC	ENTRY SC1	\$10.95	\$10.95	\$10.95	\$10.95

GRADE 1 DEADBOLTS

Our Grade 1 Deadbolts are heavy duty commercial grade but can also be used as a residential lock where you want a more heavy duty option.

Standard Features

- Complies with ANSI A156.5, Grade 1, 250,000 cycles,
- UL/ULC listed 3 hour fire rating
- Chassis Tubular, steel Chassis
- Deadbolt 1" x 2-1/4", square corner faceplate, triple option.
- 1" housing diameter (stainless steel)
- 1" throw, roller bar (added security for hacksaw or blade cutting)
- Backset: 2-3/4" (standard)
- Strike: 1-1/8" x 2-3/4", square corner faceplate
- Door Range: 1-3/8" to 2"
- Door Preparation: 2-1/8" diameter for bore, 1" diameter for bolt



GRD 1 DEADBOLTS

ADJ BACKSET		3	10B	32D
DB160SC	SINGLE CYL	\$19.95	\$22.50	\$19.95

GRADE 2 DEADBOLTS

Our Grade 2 Deadbolts are a great heavy duty residential lock but they also work well on commercial doors with medium traffic.

Standard Features

- Complies with ANSI A156.5, Grade 2, 150,000 cycles,
- UL/ULC listed 3 hour fire rating
- Deadbolt: 1" x 2-1/4", square corner faceplate, triple option.
- 1" housing diameter (stainless steel)
- 1" throw, roller bar (added security for hacksaw or blade cutting)
- Backset: Adjustable 2-3/8" to 2-3/4", 2-1/4" X 1" faceplate standard.
- Strike: 1-1/8" x 2-3/4", square corner faceplate
- Door Range: 1-3/8" - 1-3/4"
- Door Preparation: 2-1/8" diameter for bore, 1" diameter for bolt.
- Fits standard 161 door prep.



GRD 2 DEADBOLTS

ADJ BACKSET		3	10B	32D
DB260SC	SINGLE CYL	\$15.95	\$16.50	\$15.50
DB262SC	DOUBLE CYL	\$19.95		\$18.95

GRADE 3 DEADBOLTS

Our Grade 3 Deadbolts are a great for residential use. They come in 4 different finishes with adjustable backsets and also available in Schlage and Kwikset keyways.

Standard Features

- Complies with ANSI A156.2 series 4000, Grade 3
- Chassis Tubular, steel
- 1" x 2-1/4", square corner faceplate, 1" housing, triple option.
- 2-3/8" to 2-3/4" Adjustable Backset
- Available in SC1 or KW1 keyway



GRD 3 DEADBOLTS

ADJ BACKSET		US3	US5	US11P	US15
DB360KW	ENTRY KW1	\$10.50	\$11.75	\$12.50	\$10.50
DB360SC	ENTRY SC1	\$10.50	\$11.75	\$12.50	\$10.50

EXIT DEVICES AND TRIM



RPB136-AL
\$69.00



ECONOMICAL GRADE 1 EXIT

RPB136-AL	36" EXIT ONLY	\$69.00
RPB148-AL	48" EXIT ONLY	\$89.00

Standard Features

Complies with ANSI A156.3, 1994, Grade 1, UL listed. Latch: Stainless Steel 5/8" throw. Backset: 2-3/4". Door Thickness: 1-3/4" - 2". Door Range: 28" - 36". Dogging key use ADA-29-0480 or VON-227.

RLR53-26D
\$46.25



TRIM SCH C KWY

RLR53-26D	ENTRY/CLASSROOM	\$46.25
RLR80-26D	STOREROOM	\$46.25

Standard Features

Use with surface exit devices. Schlage C Keyway. Will accept Schlage/GMS K001 type cylinder. This is non-clutch trim.

RLE53-26D
\$40.00



ESCUTCHEON TRIM SCH C KWY

RLE53-26D	ENTRY/CLASSROOM	\$40.00
RLE80-26D	STOREROOM	\$40.00

Standard Features

Exterior heavy-duty escutcheon free wheeling lever trim, includes Sch C Kwy 1-1/4" mortise cylinder. Escutcheon Dimensions: 2-3/4" x 8-3/4".



RPB336-32D
\$185.00



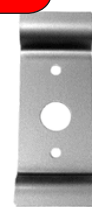
HEAVY DUTY EXIT 99EO FOOTPRINT

RPB336-32D	36" EXIT ONLY	\$185.00
------------	---------------	----------

Standard Features

ANSI A156.3, 2001, Grade 1, UL/ULC Listed. Rail Fits 30" to 36" doors. Latch Stainless steel 3/4" throw with deadlatch feature. Backset: 2-3/4". Strike Adjustable with slotted holes for adjustments. Fasteners Accommodates wood and metal doors with thru bolts standard. Door Range: 1-3/4" to 2-1/4" thick. Door Preparation Surface mounted and covers 161 prep.

R8P03-AL
\$8.50



WING PULL

R8P03-AL	\$8.50
----------	--------

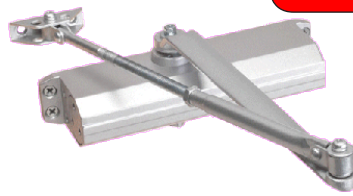
Standard Features

Use with surface exit devices. Rim cylinder not included.

DOOR CLOSERS



DC1614-AL
\$39.95



NORTON 1600 FOOTPRINT

		AL	DU
DC1614	SIZE 1-4	\$39.95	\$39.95
DC1636	SIZE 3-6	\$39.30	\$39.30

Standard Features

ANSI A156.4, Grade 1, 2 million cycles, UL listed. Non-handed, cast aluminum. Mount regular, top jamb or parallel arm. Spring Power Adjustable 1 - 4. Backcheck Adjustable, Sweep & Latch. Fasteners for aluminum, hollow metal and wood doors. Door Range Up to 180 degrees. Hole patterns 3/4" - 9 1/16"



DC1916-AL
\$89.95



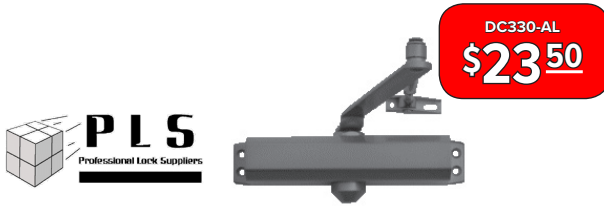
LCN 4040XP FOOTPRINT

		AL	DU
DC1916	SIZE ADJ 1-6	\$89.95	\$89.95

Standard Features

Heavy Cast Steel Body Closer. ANSI A156.4, Grade 1, 2 million cycles, UL listed. Non-handed, cast steel, mounting to regular, top jamb or parallel arm. Spring Power Adjustable 1 - 6 sizes. Backcheck Adjustable, Sweep, and Latch. Fasteners Compatible for aluminum, hollow metal and wood doors and frames.

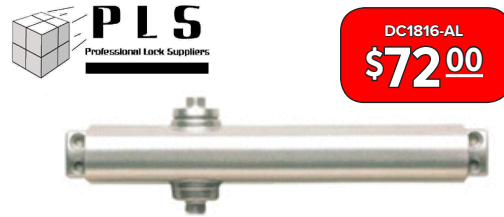
DOOR CLOSERS



NORTON 1600 FOOTPRINT		AL	DU
DC330	SIZE 3	\$23.50	\$23.50
DC340	SIZE 4	\$24.50	\$24.50

Standard Features

ANSI A 156.4, 300 Series, Grade 3, 500000 cycles, UL listed. Closer is non-handed, cast aluminum, mounting to regular, top jamb or parallel arm applications latch & sweep adjustments. Door Preparation: 9-1/16" horizontal and 3/4" vertical mounting hole locations (retrofits traditional closer).



NORTON 8000 FOOTPRINT		AL	DU
DC1816	SIZE ADJ 1-6	\$72.00	\$72.00

Standard Features

Footprint - 12" CTC Across 3/4" CTC Down. ANSI A156.4, Grade 1, 2 million cycles, UL listed up to 3 hours fire rated. Chassis/Closer Cast aluminum. Non-handed. Tri-Pack — regular, top jamb and parallel arm applications. Adjustable size 1 - 6 standard for interior and exterior applications. Range Up to 180 degree.

Standard Features
Includes aluminum and duro faceplates. Faceplate measures 1" x 6-7/8".

SWING UP BOLT

GHDB3132	31/32" BS	\$9.95
GHDB118	1-1/8" BS	\$9.95

Standard Features
Includes aluminum and duro faceplates. Faceplate measures 1" x 6-7/8".

HOOK BOLT

	AL/DU	
GHHB3132	31/32"	\$9.95
GHHB118	1-1/8"	\$9.95

GLASS DOOR HARDWARE

Standard Features
Includes aluminum and duro faceplates. Faceplate measures 1" x 6-7/8".

DEADLATCH

	AL/DU	
GHDL3132	31/32"	\$9.95
GHDL118	1-1/8"	\$9.95

Standard Features
Reverse handing using the cam plug. Available in aluminum or dark bronze finish.

LEVER

	AL/DU	
GHDLL		\$9.95

Standard Features
Reverse handing push/pull. Available in aluminum or dark bronze finish.

PUSH/PULL PADDLE

	AL/DU	
GHPUSH	REVERSABLE	\$19.50

HINGES

Standard Features

- SOLD 3 PER BOX
- Ball Bearing Commercial Hinge
- Complies with ANSI A156.1, 1999
- 4-1/2" x 4-1/2", square corner, templated, .134" gauge steel
- Furnished with 24 metal screws and 24 #12 wood screws

HINGES		PER BOX
H4545-BB-26D	STD WEIGHT	\$12.00
H4545-BB-32D-NRP	STAINLESS STD WEIGHT NON-REMOVABLE PIN	\$28.00

KEY BLANKS 250 PACKS

Standard Features

SC1-250	\$0.135	KW1-250-NP	\$0.135
KEY BLANK 5 PIN C KWY BRASS		ILC-1176 NICKEL PLATED	
SC1-250-NP	\$0.135	M1-250	\$0.135
KEY BLANK 5 PIN C KWY NICKEL		ILC-1092 BRASS	
SC9-250	\$0.23	KW11-250-NP	\$0.23
KEY BLANK 6 PIN, E KWY, BRASS		ILC-A1176KT	
KW1-250	\$0.135	Y1-250	\$0.23
ILC-1176 BRASS		ILC-999 BRASS	
		SC4-250	\$0.23
		KEY BLANK 6 PIN C KWY, BRASS	
		SC4-250-NP	\$0.23
		KEY BLANK 6 PIN C KWY NICKEL	
		Y11-250	\$0.23
		KEY BLANK ILC-01122	

PART #	LIST	COST
DB160-10B	\$45.00	\$22.50
DB160-3	\$39.90	\$19.95
DB160-32D	\$39.90	\$19.95
DB260SC-10B	\$33.00	\$16.50
DB260SC-3	\$31.90	\$15.95
DB260SC-32D	\$31.00	\$15.50
DB262SC-3	\$39.90	\$19.95
DB262SC-32D	\$37.90	\$18.95
DB360KW-11P	\$25.00	\$12.50
DB360KW-15	\$21.00	\$10.50
DB360KW-3	\$21.00	\$10.50
DB360KW-32D	\$21.00	\$10.50
DB360KW-5	\$23.50	\$11.75
DB360SC-11P	\$25.00	\$12.50
DB360SC-15	\$21.00	\$10.50
DB360SC-3	\$21.00	\$10.50
DB360SC-32D	\$21.00	\$10.50
DB360SC-5	\$23.50	\$11.75
DBDI-32D	\$9.96	\$4.98
DC1614-AL OR DU	\$79.90	\$39.95
DC330-AL OR DU	\$47.00	\$23.50
DC340-AL OR DU	\$49.00	\$24.50
GHDB118 OR 3132	\$19.90	\$9.95
GHDL118 OR 3132	\$19.90	\$9.95
GHDL-AL OR DU	\$19.90	\$9.95
GHHB118 OR 3132	\$19.90	\$9.95
GHPUSH-AL OR DU	\$39.00	\$19.50
H4545-BB-26D	\$24.00	\$12.00
H4545-BB-32D-NRP	\$56.00	\$28.00
K153-32D	\$79.42	\$39.71
K180-32D	\$79.42	\$39.71
K210-ORB-US3	\$50.00	\$25.00
K210-ORB-US32D	\$41.31	\$20.66
K240-ORB-US3	\$50.00	\$25.00
K240-ORB-US32D	\$42.44	\$21.22

PART #	LIST	COST
K253-ORB-US10B	\$66.00	\$33.00
K253-ORB-US10B-234	\$66.00	\$33.00
K253-ORB-US3	\$46.00	\$23.00
K253-ORB-US3-234	\$46.00	\$23.00
K253-ORB-US32D	\$42.00	\$21.00
K253-ORB-US32D-234	\$42.00	\$21.00
K253-ORB-US5	\$48.16	\$24.08
K253-ORB-US5	\$48.16	\$24.08
K253-ORB-US5-234	\$48.16	\$24.08
K270-ORB-US32D	\$46.18	\$23.09
K270-ORB-US32D-234	\$46.18	\$23.09
K280-ORB-US10B	\$66.00	\$33.00
K280-ORB-US10B-234	\$66.00	\$33.00
K280-ORB-US3	\$46.00	\$23.00
K280-ORB-US3-234	\$46.00	\$23.00
K280-ORB-US32D	\$42.00	\$21.00
K280-ORB-US32D-234	\$42.00	\$21.00
K310P-US11P	\$25.00	\$12.50
K310P-US15	\$19.90	\$9.95
K310P-US3	\$19.90	\$9.95
K310P-US5	\$19.90	\$9.95
K340P-US11P	\$25.90	\$12.95
K340P-US15	\$21.00	\$10.50
K340P-US3	\$21.00	\$10.50
K340P-US5	\$21.00	\$10.50
K353E-15-KW	\$19.23	\$9.62
K353E-15-SC	\$19.23	\$9.62
K353E-32D-KW	\$17.63	\$8.82
K353E-32D-SC	\$17.63	\$8.82
K353E-US3-KW	\$18.34	\$9.17
K353E-US3-SC	\$22.56	\$11.28
K353E-US5-KW	\$22.94	\$11.47
K353E-US5-SC	\$29.61	\$14.81
K353P-KW-US11P	\$23.00	\$11.50
K353P-KW-US15	\$21.90	\$10.95

PART #	LIST	COST
K353P-KW-US3	\$21.90	\$10.95
K353P-KW-US5	\$21.90	\$10.95
K353P-SC-US11P	\$21.90	\$10.95
K353P-SC-US15	\$21.90	\$10.95
K353P-SC-US3	\$21.90	\$10.95
K353P-SC-US5	\$21.90	\$10.95
K380E-32D-KW	\$21.12	\$10.56
K380E-32D-SC	\$21.12	\$10.56
K380E-US3-KW	\$21.98	\$10.99
K380E-US3-SC	\$22.85	\$11.43
KW1-250	\$0.44	\$0.135
KW1-250-NP	\$0.44	\$0.135
KW11-250-NP	\$0.59	\$0.23
L110-26D-4	\$130.12	\$65.06
L140-26D-4	\$133.96	\$66.98
L153-26D-4	\$136.00	\$68.00
L170-26D-4	\$126.00	\$63.00
L175-26D-4	\$128.90	\$64.45
L180-26D-4	\$136.00	\$68.00
L210-10B-4	\$78.00	\$39.00
L210-26D-4	\$66.50	\$33.25
L210-26D-8	\$66.50	\$33.25
L210-US3-4	\$74.00	\$37.00
L240-10B-4	\$79.90	\$39.95
L240-26D-4	\$67.50	\$33.75
L240-26D-8	\$67.50	\$33.75
L240-US3-4	\$74.00	\$37.00
L253-10B-4	\$76.00	\$38.00
L253-10B-8	\$76.00	\$38.00
L253-26D-4	\$66.00	\$33.00
L253-26D-8	\$66.00	\$33.00
L253-IC-26D-4	\$76.00	\$38.00
L253-IC-26D-8	\$76.00	\$38.00
L253-US3-4	\$72.00	\$36.00
L253-US3-8	\$72.00	\$36.00

PART #	LIST	COST
L253FW-10B-4	\$78.00	\$39.00
L253FW-26D-4	\$73.96	\$36.98
L253FW-26D-8	\$73.96	\$36.98
L253FW-US3-4	\$76.00	\$38.00
L270-26D-4	\$75.08	\$37.54
L270-26D-8	\$75.08	\$37.54
L270-IC-26D-4	\$78.00	\$39.00
L270-US3-4	\$76.00	\$38.00
L270FW-26D-4	\$80.78	\$40.39
L270FW-26D-8	\$80.78	\$40.39
L280-10B-4	\$76.00	\$38.00
L280-10B-8	\$76.00	\$38.00
L280-26D-4	\$66.00	\$33.00
L280-26D-8	\$66.00	\$33.00
L280-IC-26D-4	\$76.00	\$38.00
L280-IC-26D-8	\$76.00	\$38.00
L280-US3-4	\$72.00	\$36.00
L280-US3-8	\$72.00	\$36.00
L280FW-10B-4	\$78.00	\$39.00
L280FW-26D-4	\$73.96	\$36.98
L280FW-26D-8	\$73.96	\$36.98
L280FW-US3-4	\$76.00	\$38.00
M1-250	\$0.44	\$0.135
R8P03-AL	\$17.00	\$8.50
RLE53-26D	\$80.00	\$40.00
RLE80-26D	\$80.00	\$40.00
RLR53-26D	\$92.50	\$46.25
RLR80-26D	\$92.50	\$46.25
RPB136-AL	\$138.00	\$69.00
RPB148-AL	\$178.00	\$89.00
RPB336-32D	\$370.00	\$185.00
SC1-250	\$0.44	\$0.135
SC1-250-NP	\$0.44	\$0.135
SC4-250	\$0.59	\$0.23
SC4-250-NP	\$0.59	\$0.23
SC9-250	\$0.59	\$0.23