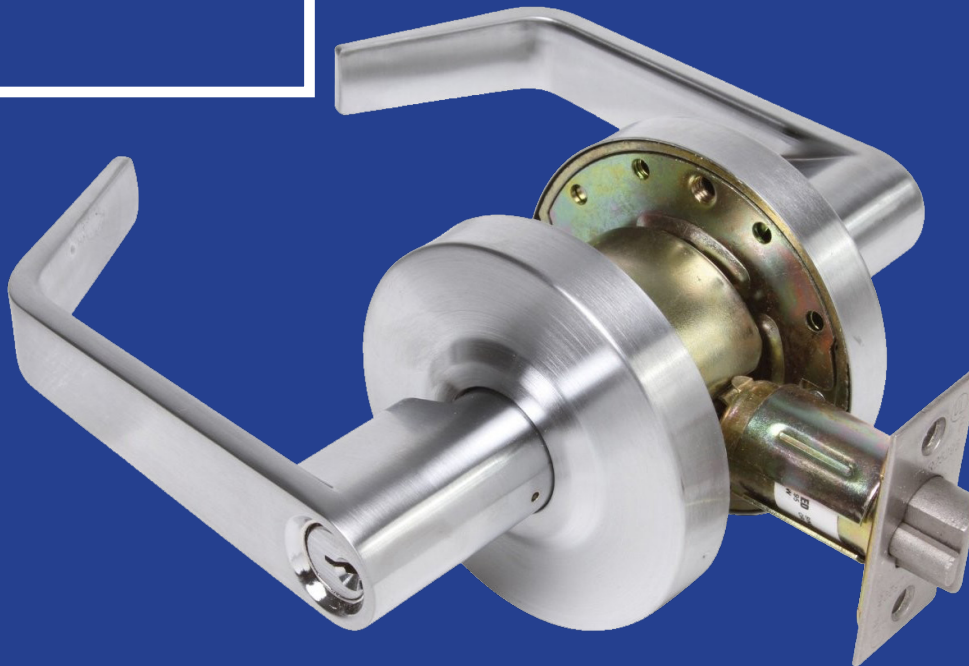


GRADE 2 LEVERS

Our Grade 2 Levers are the most versatile levers we offer. They comply with ANSI A156.2, Series 4000, Grade 2, 400,000 cycles, ANSI A117.1 accessibility (ADA) code, UL/ULC listed for 3 hour fire door. They have a cylindrical chassie that is steel-coated w/ zinc dichronate for corrosion resistance.

L253-26D-4

**CALL FOR
PRICING!**



OPTIONS

Comes with standard Schlage C keyway. Available with "FW" (Clutch), and SFIC prep (Best).

FINISHES

Available in US3 (Brass), 10B (Duronotic) and 26D (Satin Chrome).

ABOUT R&H WHOLESALE SUPPLY

R&H Wholesale Supply Inc. is a wholesale distributor of door hardware and locksmith supplies. We have been located in San Francisco since 1949 and currently carry over 13,500 products from over 100 different product brands. Our PLS brand, which stands for professional locksmith supplies, is an in house brand that was created to fill a void for our customers. PLS delivers high quality security products at a great value.

VISIT US ONLINE



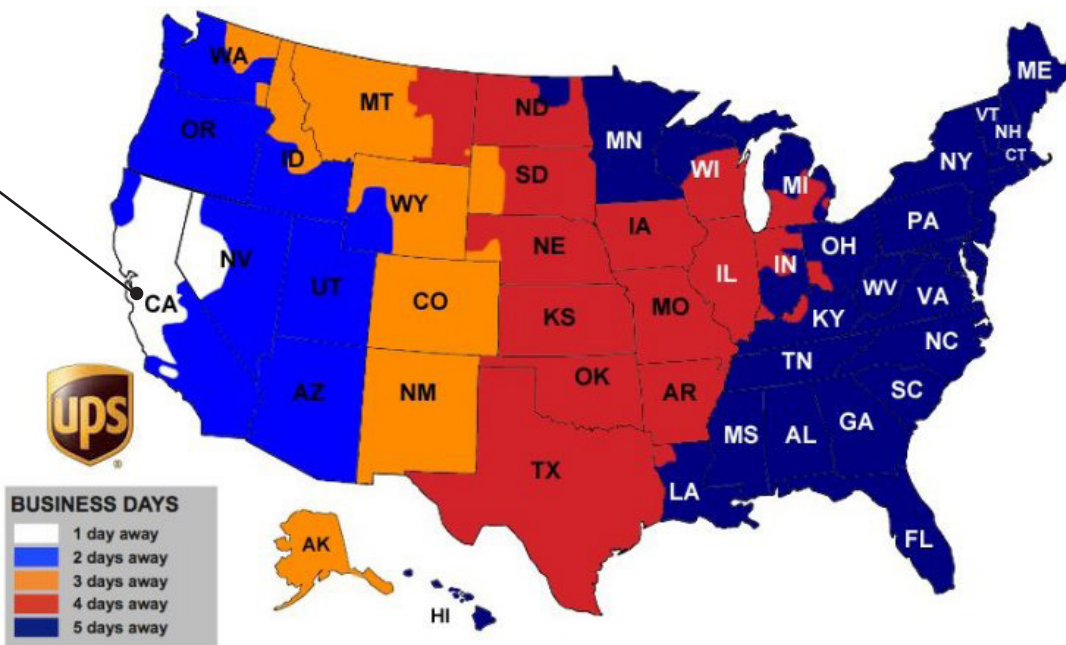
www.RHwholesale.com

* FREE UPS GROUND FREIGHT - \$350 order minimum

Orders place before 3:00 PM P.S.T ship same day.
 Order ship from our warehouse in San Francisco, California, 94124.
 Pricing subject to change without notice.

- * Some items like safes, key machines, and promotional items may not be included in our free freight policy.
- * Free freight does not include special shipping requests like Next Day, Second Day, or Three Day shipments.
- * Transit times are estimated and not guaranteed.
- * Excludes AK, HI.

San Francisco, California, 94124



All levers come Qty: 6 PER CASE

GRADE 1 LEVERS

Our Grade 1 Levers are heavy duty for commercial use. Great for commercial buildings such as schools, hospitals, government, retail and office. Complies with ANSI A156.2 - 2003, Series 4000, Grade 1, 800,000 cycles, UL/ULC listed for 3 hour fire door.

Standard Features

- Chassis: Cylindrical, steel - coated with zinc dichromate (corrosion resistance)
- Freewheeling clutch (added security from hammer attacks)
- Lever: Non-handed, solid cast
- Latch: 1-1/8" x 2-1/4", square corner faceplate
- 1" housing diameter (stainless steel), 1/2" throw
- Rose: 3-1/2" diameter
- Backset: 2-3/4"
- Strike: Square corner 1-1/4" x 4-7/8" ANSI ASA Strike
- Door Range: 1-3/8" to 2"
- Door Preparation: 2-1/8" diameter for lever, 1" diameter for latch bolt.
- Fits standard 161 door prep with through-bolting through the door.



GRD 1 LEVER C KWY 2-3/4" Backset

| | | |
|------------|--------------------|-------|
| L110-26D-4 | PASSAGE | STOCK |
| L140-26D-4 | PRIVACY | STOCK |
| L153-26D-4 | ENTRY | STOCK |
| L170-26D-4 | CLASSROOM | STOCK |
| L175-26D-4 | CLASSROOM SECURITY | STOCK |
| L180-26D-4 | STOREROOM | STOCK |

| | | |
|-----------|-------------------------|-------|
| L-234-26D | 2-3/4" DEADLATCH | STOCK |
| L-238-26D | 2-3/8" DEADLATCH | STOCK |
| L-5-LINK | WORKS W/ 2-3/4" LATCHES | STOCK |

GRADE 2 LEVERS

All levers come Qty: 6 PER CASE

Our Grade 2 Levers are our most versatile levers. Complies with ANSI A156.2, Series 4000, Grade 2, 400,000 cycles, ANSI A117.1 accessibility (ADA) code, UL/ULC listed for 3 hour fire door.

Standard Features

- Chassis: Cylindrical, steel-coated w/ zinc dichromate (corrosion resistance)
- Latch: 1-1/8" x 2-1/4" square corner faceplate 3/4" housing, 1/2" throw (stainless steel).
- Rose: 3-1/4" diameter
- Removable thru-bolts standard
- Backset: 2-3/8" or 2-3/4"
- Strike: Square corner 1-1/4" x 4-7/8" ANSI ASA Strike
- Door Range: 1-3/8" to 2"
- Door Preparation: 2-1/8" diameter for bore, 1" diameter latch bore.

OPTIONAL FEATURES

- Chassis: Freewheeling clutch



GRD 2 LEVER C KWY

| 2-3/8" or 2-3/4" Backset | | US3 | 10B | 26D |
|--------------------------|-----------|-------|-------|-------|
| L210 | PASSAGE | STOCK | STOCK | STOCK |
| L240 | PRIVACY | STOCK | STOCK | STOCK |
| L253 | ENTRY | STOCK | STOCK | STOCK |
| L270 | CLASSROOM | STOCK | | STOCK |
| L280 | STOREROOM | STOCK | STOCK | STOCK |

LATCHES FOR GRD 2 LEVERS & KNOBS US3/10B/26D

| | | |
|----------|------------------------------|-------|
| ALCULSLD | 2-3/8" OR 2-3/4" DEADLATCH | STOCK |
| ALCULSLS | 2-3/8" OR 2-3/4" SPRINGLATCH | STOCK |
| SL5 | WORKS W/ 2-3/4" LATCHES | STOCK |



Clutch Feature! (Free Wheeling)



GRD 2 CLUTCH LEVER C KWY

| 2-3/8" or 2-3/4" Backset | | US3 | 10B | 26D |
|--------------------------|------------------|-------|-------|-------|
| L253FW | ENTRY CLUTCH | STOCK | STOCK | STOCK |
| L270FW | CLASSROOM CLUTCH | | | STOCK |
| L280FW | STOREROOM CLUTCH | STOCK | STOCK | STOCK |



SFIC Prep!



GRD 2 LEVER SFIC PREP

| 2-3/4" Backset | | 26D |
|----------------|-----------|-------|
| L253-IC-26D-4 | ENTRY | STOCK |
| L270-IC-26D-4 | CLASSROOM | STOCK |
| L280-IC-26D-4 | STOREROOM | STOCK |

GRADE 1 KNOBS

Our Grade 1 Knobs are heavy duty for commercial use. Great for commercial buildings such as schools, hospitals, government, retail and office. Complies with ANSI A156.2 - 2003, Series 4000, Grade 1, 800,000 cycles, UL/ULC listed for 3 hour fire door.

Standard Features

- Cylindrical, steel chassis- coated with zinc dichromate (corrosion resistance)
- Rose 3" diameter
- Backset: 2-3/4"
- Strike: Square corner 1-1/4" x 4-7/8" ANSI ASA Strike
- Door Range: 1-3/8" to 2"
- Latch: 1-1/8" x 2-1/4", square corner faceplate



GRD 1 KNOB

2-3/4" Backset

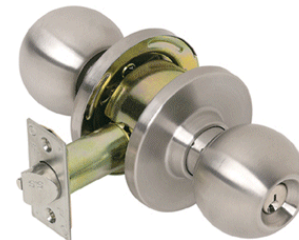
| | | |
|----------|-----------|-------|
| K153-32D | ENTRY | STOCK |
| K180-32D | STOREROOM | STOCK |

GRADE 2 KNOBS

Our Grade 2 Knobs are a great heavy duty residential lock but they also work well on commercial doors with medium traffic.

Standard Features

- Complies with ANSI A156.2, Series 4000, Grade 2, (400,000 cycles)
- UL/ULC listed for 3 hour fire door
- Chassis: Cylindrical, steel - coated with zinc dichromate (corrosion resistance)
- Latch: 1-1/8" x 2-1/4", square corner faceplate
- 1" housing diameter (stainless steel), 1/2" throw
- Rose 3" diameter
- Backset: 2-3/4" OR 2-3/8"
- Strike: Square corner 1-1/4" x 4-7/8" ANSI ASA Strike
- Door Range: 1-3/8" to 1-3/4"
- Door Preparation: 2-1/8" diameter for knob, 1" diameter for latch bolt.



GRD 2 KNOB

2-3/8" or 2-3/4" Backset US3 10B US32D

| | | | |
|------|-----------|-------|-------|
| K210 | PASSAGE | STOCK | STOCK |
| K240 | PRIVACY | STOCK | STOCK |
| K253 | ENTRY | STOCK | STOCK |
| K270 | CLASSROOM | | STOCK |
| K280 | STOREROOM | STOCK | STOCK |

LATCHES FOR GRD 2 LEVERS & KNOBS US3/10B/26D

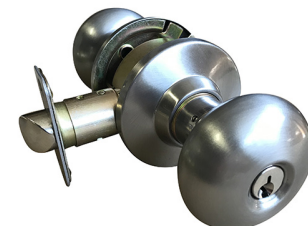
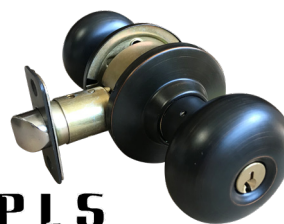
| | | |
|----------|------------------------------|-------|
| ALCULSLD | 2-3/8" OR 2-3/4" DEADLATCH | STOCK |
| ALCULSLS | 2-3/8" OR 2-3/4" SPRINGLATCH | STOCK |
| SL5 | WORKS W/ 2-3/4" LATCHES | STOCK |

GRADE 3 KNOBS

Our Grade 3 Knobs are great residential locks. They have a Plymouth style design with a tubular chassis and come with adjustable backsets. They are also available in Schlage and Kwikset keyways.

Standard Features

- Complies with ANSI A156.2 series 4000, Grade 3
- Chassis Tubular, steel
- Full lip strike
- Available in SC1 or KW1 keyway
- Latchbolt stainless steel with 1/2" throw
- Rose: 2-1/2" diameter
- Backset: Latch backset adjustable 2-3/8" to 2-3/4"



GRD 3 KNOB SC1 or KW1 KKY

| | | | | | |
|-------------|-----------|-------|-------|-------|-------|
| ADJ BACKSET | | US3 | US5 | US11P | US15 |
| K310P | PASSAGE | STOCK | STOCK | STOCK | STOCK |
| K340P | PRIVACY | STOCK | STOCK | STOCK | STOCK |
| K353P-KW | ENTRY KW1 | STOCK | STOCK | STOCK | STOCK |
| K353P-SC | ENTRY SC1 | STOCK | STOCK | STOCK | STOCK |

GRADE 1 DEADBOLTS

Our Grade 1 Deadbolts are heavy duty commercial grade but can also be used as a residential lock where you want a more heavy duty option.

Standard Features

- Complies with ANSI A156.5, Grade 1, 250,000 cycles,
- UL/ULC listed 3 hour fire rating
- Chassis Tubular, steel Chassis
- Adjustable 2-3/8" to 2-3/4", 2-1/4" x 1" faceplate standard
- Round corner faceplate and drive-in cap included
- 1" housing diameter (stainless steel)
- 1" throw, roller bar (added security for hacksaw or blade cutting)
- Strike: 1-1/8" x 2-3/4", square corner faceplate
- Door Range: 1-3/8" to 2"
- Door Preparation: 2-1/8" diameter for bore, 1" diameter for bolt



GRD 1 DEADBOLTS

| ADJ BACKSET | | 3 | 10B | 32D |
|-------------|------------|-------|-------|-------|
| DB160SC | SINGLE CYL | STOCK | STOCK | STOCK |

GRADE 2 DEADBOLTS

Our Grade 2 Deadbolts are a great heavy duty residential lock but they also work well on commercial doors with medium traffic.

Standard Features

- Complies with ANSI A156.5, Grade 2, 150,000 cycles,
- UL/ULC listed 3 hour fire rating
- Adjustable 2-3/8" to 2-3/4", 2-1/4" x 1" faceplate standard
- Round corner faceplate and drive-in cap included
- 1" housing diameter (stainless steel)
- 1" throw, roller bar (added security for hacksaw or blade cutting)
- Strike: 1-1/8" x 2-3/4", square corner faceplate
- Door Range: 1-3/8" - 1-3/4"
- Door Preparation: 2-1/8" diameter for bore, 1" diameter for bolt.
- Fits standard 161 door prep.



GRD 2 DEADBOLTS

| ADJ BACKSET | | 3 | 10B | 32D |
|-------------|------------|-------|-------|-------|
| DB260SC | SINGLE CYL | STOCK | STOCK | STOCK |
| DB262SC | DOUBLE CYL | STOCK | | STOCK |

GRADE 3 DEADBOLTS

Our Grade 3 Deadbolts are a great for residential use. They come in 4 different finishes with adjustable backsets and also available in Schlage and Kwikset keyways.

Standard Features

- Complies with ANSI A156.2 series 4000, Grade 3
- Chassis Tubular, steel
- Adjustable 2-3/8" to 2-3/4", 2-1/4" x 1" faceplate standard
- Round corner faceplate and drive-in cap included
- Available in SC1 or KW1 keyway



GRD 3 DEADBOLTS

| ADJ BACKSET | | US3 | US5 | US11P | US15 |
|-------------|-----------|-------|-------|-------|-------|
| DB360KW | ENTRY KW1 | STOCK | STOCK | STOCK | STOCK |
| DB360SC | ENTRY SC1 | STOCK | STOCK | STOCK | STOCK |

EXIT DEVICES AND TRIM



ECONOMICAL GRADE 1 EXIT

| | | |
|------------------|---------------|--------------|
| RPB136-AL | 36" EXIT ONLY | STOCK |
| RPB148-AL | 48" EXIT ONLY | STOCK |

Standard Features

Complies with ANSI A156.3, 1994, Grade 1, UL listed. Latch: Stainless Steel 5/8" throw. Backset: 2-3/4". Door Thickness: 1-3/4" - 2". Door Range: 28" - 36". Dogging key use ADA-29-0480 or VON-227.



HEAVY DUTY EXIT 99EO FOOTPRINT

| | | |
|-------------------|---------------|--------------|
| RPB336-32D | 36" EXIT ONLY | STOCK |
|-------------------|---------------|--------------|

Standard Features

ANSI A156.3, 2001, Grade 1, UL/ULC Listed. Rail Fits 30" to 36" doors. Latch Stainless steel 3/4" throw with deadlatch feature. Backset: 2-3/4". Strike Adjustable with slotted holes for adjustments. Fasteners Accommodates wood and metal doors with thru bolts standard. Door Range: 1-3/4" to 2-1/4" thick. Door Preparation Surface mounted and covers 161 prep.



TRIM SCH C KWY

| | | |
|------------------|-----------------|--------------|
| RLR53-26D | ENTRY/CLASSROOM | STOCK |
| RLR80-26D | STOREROOM | STOCK |

Standard Features

Use with surface exit devices. Schlage C Keyway. Will accept Schlage/GMS K001 type cylinder. This is non-clutch trim.



ESCUTCHEON TRIM SCH C KWY

| | | |
|------------------|-----------------|--------------|
| RLE53-26D | ENTRY/CLASSROOM | STOCK |
| RLE80-26D | STOREROOM | STOCK |

Standard Features

Exterior heavy-duty escutcheon free wheeling lever trim, includes Sch C Kwy 1-1/4" mortise cylinder. Escutcheon Dimensions: 2-3/4" x 8-3/4".

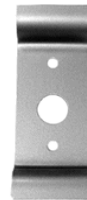


WING PULL

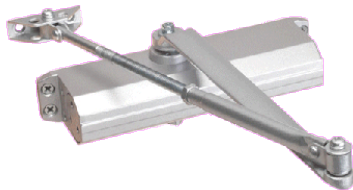
| | |
|-----------------|--------------|
| R8P03-AL | STOCK |
|-----------------|--------------|

Standard Features

Use with surface exit devices. Rim cylinder not included.



DOOR CLOSERS



NORTON 1600 FOOTPRINT

| | | AL | DU |
|---------------|----------|--------------|--------------|
| DC1614 | SIZE 1-4 | STOCK | STOCK |
| DC1636 | SIZE 3-6 | STOCK | STOCK |

Standard Features

ANSI A156.4, Grade 1, 2 million cycles, UL listed. Non-handed, cast aluminum. Mount regular, top jamb or parallel arm. Spring Power Adjustable 1 - 4. Backcheck Adjustable, Sweep & Latch. Fasteners for aluminum, hollow metal and wood doors. Door Range Up to 180 degrees. Hole patterns 3/4" - 9 1/16"



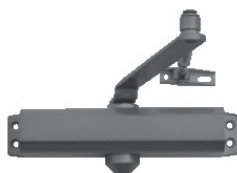
LCN 4040XP FOOTPRINT

| | | AL | DU |
|---------------|--------------|--------------|--------------|
| DC1916 | SIZE ADJ 1-6 | STOCK | STOCK |

Standard Features

Heavy Cast Steel Body Closer. ANSI A156.4, Grade 1, 2 million cycles, UL listed. Non-handed, cast steel, mounting to regular, top jamb or parallel arm. Spring Power Adjustable 1 - 6 sizes. Backcheck Adjustable, Sweep, and Latch. Fasteners Compatible for aluminum, hollow metal and wood doors and frames.

DOOR CLOSERS



| NORTON 1600 FOOTPRINT | | AL | DU |
|-----------------------|--------|-------|-------|
| DC330 | SIZE 3 | STOCK | STOCK |
| DC340 | SIZE 4 | STOCK | STOCK |

Standard Features

ANSI A 156.4, 300 Series, Grade 3, 500000 cycles, UL listed. Closer is non-handed, cast aluminum, mounting to regular, top jamb or parallel arm applications latch & sweep adjustments. Door Preparation: 9-1/16" horizontal and 3/4" vertical mounting hole locations (retrofits traditional closer).



| NORTON 8000 FOOTPRINT | | AL | DU |
|-----------------------|--------------|-------|-------|
| DC1816 | SIZE ADJ 1-6 | STOCK | STOCK |

Standard Features

Footprint - 12" CTC Across 3/4" CTC Down. ANSI A156.4, Grade 1, 2 million cycles, UL listed up to 3 hours fire rated. Chassis/Closer Cast aluminum. Non-handed. Tri-Pack — regular, top jamb and parallel arm applications. Adjustable size 1 - 6 standard for interior and exterior applications. Range Up to 180 degree.



Standard Features

Includes aluminum and duro faceplates. Faceplate measures 1" x 6-7/8".

SWING UP BOLT

| | | |
|----------|-----------|-------|
| GHDB3132 | 31/32" BS | STOCK |
| GHDB118 | 1-1/8" BS | STOCK |



Standard Features

Includes aluminum and duro faceplates. Faceplate measures 1" x 6-7/8".

| HOOK BOLT | | AL/DU |
|-----------|--------|-------|
| GHHB3132 | 31/32" | STOCK |
| GHHB118 | 1-1/8" | STOCK |



Standard Features

Includes aluminum and duro faceplates. Faceplate measures 1" x 6-7/8".

| DEADLATCH | | AL/DU |
|-----------|--------|-------|
| GHDL3132 | 31/32" | STOCK |
| GHDL118 | 1-1/8" | STOCK |



Standard Features

Reverse handing using the cam plug. Available in aluminum or dark bronze finish.

| LEVER | AL/DU |
|-------|-------|
| GHDLL | STOCK |



Standard Features

Reverse handing push/pull. Available in aluminum or dark bronze finish.

| PUSH/PULL PADDLE | | AL/DU |
|------------------|------------|-------|
| GHPUSH | REVERSABLE | STOCK |

HINGES



SOLD 3 PER BOX

Standard Features

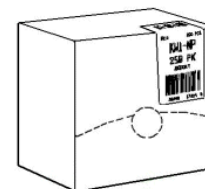
- SOLD 3 PER BOX
- Ball Bearing Commercial Hinge
- Complies with ANSI A156.1, 1999
- 4-1/2" x 4-1/2", square corner, templated, .134" gauge steel
- Furnished with 24 metal screws and 24 #12 wood screws

| HINGES | | PER BOX |
|------------------|--|---------|
| H4545-BB-26D | STD WEIGHT | STOCK |
| H4545-BB-32D-NRP | STAINLESS STD WEIGHT NON-REMOVABLE PIN | STOCK |

KEY BLANKS 250 PACKS



PER BOX



| | | | |
|-------------------------------|-------|------------------------------|-------|
| SC1-250 | STOCK | KW1-250-NP | STOCK |
| KEY BLANK 5 PIN C KWY BRASS | | ILC-1176 NICKEL PLATED | |
| SC1-250-NP | STOCK | M1-250 | STOCK |
| KEY BLANK 5 PIN C KWY NICKEL | | ILC-1092 BRASS | |
| SC9-250 | STOCK | KW11-250-NP | STOCK |
| KEY BLANK 6 PIN, E KWY, BRASS | | ILC-A1176KT | |
| KW1-250 | STOCK | Y1-250 | STOCK |
| ILC-1176 BRASS | | ILC-999 BRASS | |
| SC4-250 | STOCK | SC4-250-NP | STOCK |
| KEY BLANK 6 PIN C KWY, BRASS | | KEY BLANK 6 PIN C KWY NICKEL | |
| Y11-250 | STOCK | KEY BLANK ILC-01122 | |

| PART # | LIST |
|------------------|---------|
| DB160-10B | \$45.00 |
| DB160-3 | \$39.90 |
| DB160-32D | \$39.90 |
| DB260SC-10B | \$33.00 |
| DB260SC-3 | \$31.90 |
| DB260SC-32D | \$31.00 |
| DB262SC-3 | \$39.90 |
| DB262SC-32D | \$37.90 |
| DB360KW-11P | \$25.00 |
| DB360KW-15 | \$21.00 |
| DB360KW-3 | \$21.00 |
| DB360KW-32D | \$21.00 |
| DB360KW-5 | \$23.50 |
| DB360SC-11P | \$25.00 |
| DB360SC-15 | \$21.00 |
| DB360SC-3 | \$21.00 |
| DB360SC-32D | \$21.00 |
| DB360SC-5 | \$23.50 |
| DBDI-32D | \$9.96 |
| DC1614-AL OR DU | \$79.90 |
| DC330-AL OR DU | \$47.00 |
| DC340-AL OR DU | \$49.00 |
| GHDB118 OR 3132 | \$19.90 |
| GHDL118 OR 3132 | \$19.90 |
| GHDLL-AL OR DU | \$19.90 |
| GHHB118 OR 3132 | \$19.90 |
| GHPUSH-AL OR DU | \$39.00 |
| H4545-BB-26D | \$24.00 |
| H4545-BB-32D-NRP | \$56.00 |
| K153-32D | \$79.42 |
| K180-32D | \$79.42 |
| K210-ORB-US3 | \$50.00 |
| K210-ORB-US32D | \$41.31 |
| K240-ORB-US3 | \$50.00 |
| K240-ORB-US32D | \$42.44 |

| PART # | LIST |
|--------------------|---------|
| K253-ORB-US10B | \$66.00 |
| K253-ORB-US10B-234 | \$66.00 |
| K253-ORB-US3 | \$46.00 |
| K253-ORB-US3-234 | \$46.00 |
| K253-ORB-US32D | \$42.00 |
| K253-ORB-US32D-234 | \$42.00 |
| K253-ORB-US5 | \$48.16 |
| K253-ORB-US5 | \$48.16 |
| K253-ORB-US5-234 | \$48.16 |
| K270-ORB-US32D | \$46.18 |
| K270-ORB-US32D-234 | \$46.18 |
| K280-ORB-US10B | \$66.00 |
| K280-ORB-US10B-234 | \$66.00 |
| K280-ORB-US3 | \$46.00 |
| K280-ORB-US3-234 | \$46.00 |
| K280-ORB-US32D | \$42.00 |
| K280-ORB-US32D-234 | \$42.00 |
| K310P-US11P | \$25.00 |
| K310P-US15 | \$19.90 |
| K310P-US3 | \$19.90 |
| K310P-US5 | \$19.90 |
| K340P-US11P | \$25.90 |
| K340P-US15 | \$21.00 |
| K340P-US3 | \$21.00 |
| K340P-US5 | \$21.00 |
| K353E-15-KW | \$19.23 |
| K353E-15-SC | \$19.23 |
| K353E-32D-KW | \$17.63 |
| K353E-32D-SC | \$17.63 |
| K353E-US3-KW | \$18.34 |
| K353E-US3-SC | \$22.56 |
| K353E-US5-KW | \$22.94 |
| K353E-US5-SC | \$29.61 |
| K353P-KW-US11P | \$23.00 |
| K353P-KW-US15 | \$21.90 |

| PART # | LIST |
|----------------|----------|
| K353P-KW-US3 | \$21.90 |
| K353P-KW-US5 | \$21.90 |
| K353P-SC-US11P | \$21.90 |
| K353P-SC-US15 | \$21.90 |
| K353P-SC-US3 | \$21.90 |
| K353P-SC-US5 | \$21.90 |
| K380E-32D-KW | \$21.12 |
| K380E-32D-SC | \$21.12 |
| K380E-US3-KW | \$21.98 |
| K380E-US3-SC | \$22.85 |
| KW1-250 | \$0.44 |
| KW1-250-NP | \$0.44 |
| KW11-250-NP | \$0.59 |
| L110-26D-4 | \$130.12 |
| L140-26D-4 | \$133.96 |
| L153-26D-4 | \$136.00 |
| L170-26D-4 | \$126.00 |
| L175-26D-4 | \$128.90 |
| L180-26D-4 | \$136.00 |
| L210-10B-4 | \$78.00 |
| L210-26D-4 | \$66.50 |
| L210-26D-8 | \$66.50 |
| L210-US3-4 | \$74.00 |
| L240-10B-4 | \$79.90 |
| L240-26D-4 | \$67.50 |
| L240-26D-8 | \$67.50 |
| L240-US3-4 | \$74.00 |
| L253-10B-4 | \$76.00 |
| L253-10B-8 | \$76.00 |
| L253-26D-4 | \$66.00 |
| L253-26D-8 | \$66.00 |
| L253-IC-26D-4 | \$76.00 |
| L253-IC-26D-8 | \$76.00 |
| L253-US3-4 | \$72.00 |
| L253-US3-8 | \$72.00 |

| PART # | LIST |
|---------------|----------|
| L253FW-10B-4 | \$78.00 |
| L253FW-26D-4 | \$73.96 |
| L253FW-26D-8 | \$73.96 |
| L253FW-US3-4 | \$76.00 |
| L270-26D-4 | \$75.08 |
| L270-26D-8 | \$75.08 |
| L270-IC-26D-4 | \$78.00 |
| L270-US3-4 | \$76.00 |
| L270FW-26D-4 | \$80.78 |
| L270FW-26D-8 | \$80.78 |
| L280-10B-4 | \$76.00 |
| L280-10B-8 | \$76.00 |
| L280-26D-4 | \$66.00 |
| L280-26D-8 | \$66.00 |
| L280-IC-26D-4 | \$76.00 |
| L280-IC-26D-8 | \$76.00 |
| L280-US3-4 | \$72.00 |
| L280-US3-8 | \$72.00 |
| L280FW-10B-4 | \$78.00 |
| L280FW-26D-4 | \$73.96 |
| L280FW-26D-8 | \$73.96 |
| L280FW-US3-4 | \$76.00 |
| M1-250 | \$0.44 |
| R8P03-AL | \$17.00 |
| RLE53-26D | \$80.00 |
| RLE80-26D | \$80.00 |
| RLR53-26D | \$92.50 |
| RLR80-26D | \$92.50 |
| RPB136-AL | \$138.00 |
| RPB148-AL | \$178.00 |
| RPB336-32D | \$370.00 |
| SC1-250 | \$0.44 |
| SC1-250-NP | \$0.44 |
| SC4-250 | \$0.59 |
| SC4-250-NP | \$0.59 |
| SC9-250 | \$0.59 |